



SPRING HILL PAD SITE FOR SALE

191st & 169 Highway (NEQ), Spring Hill, Kansas



SALE PRICE: \$300,000 | 1.4 ACRES

DEMOGRAPHICS

	1 mile	3 miles	5 miles
Estimated Population	531	7,854	34,780
Avg. Household Income	\$126,702	\$90,354	\$107,373

- Commercial lot zoned C-2
- Excellent highway visibility
- Pad site ready
- Utilities to site
- Paved streets



CLICK HERE TO VIEW MORE LISTING INFORMATION

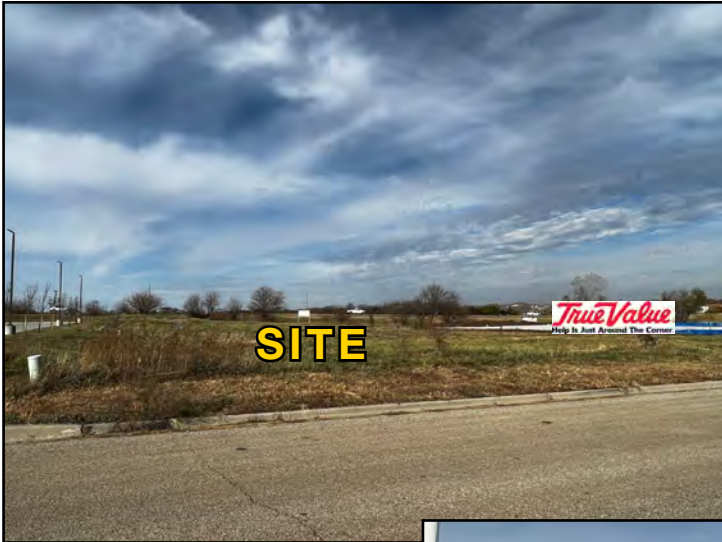
For More Information Contact:

GREG ROBERTS | 816.412.7384 | groberts@blockandco.com

Exclusive Agent



PHOTOS

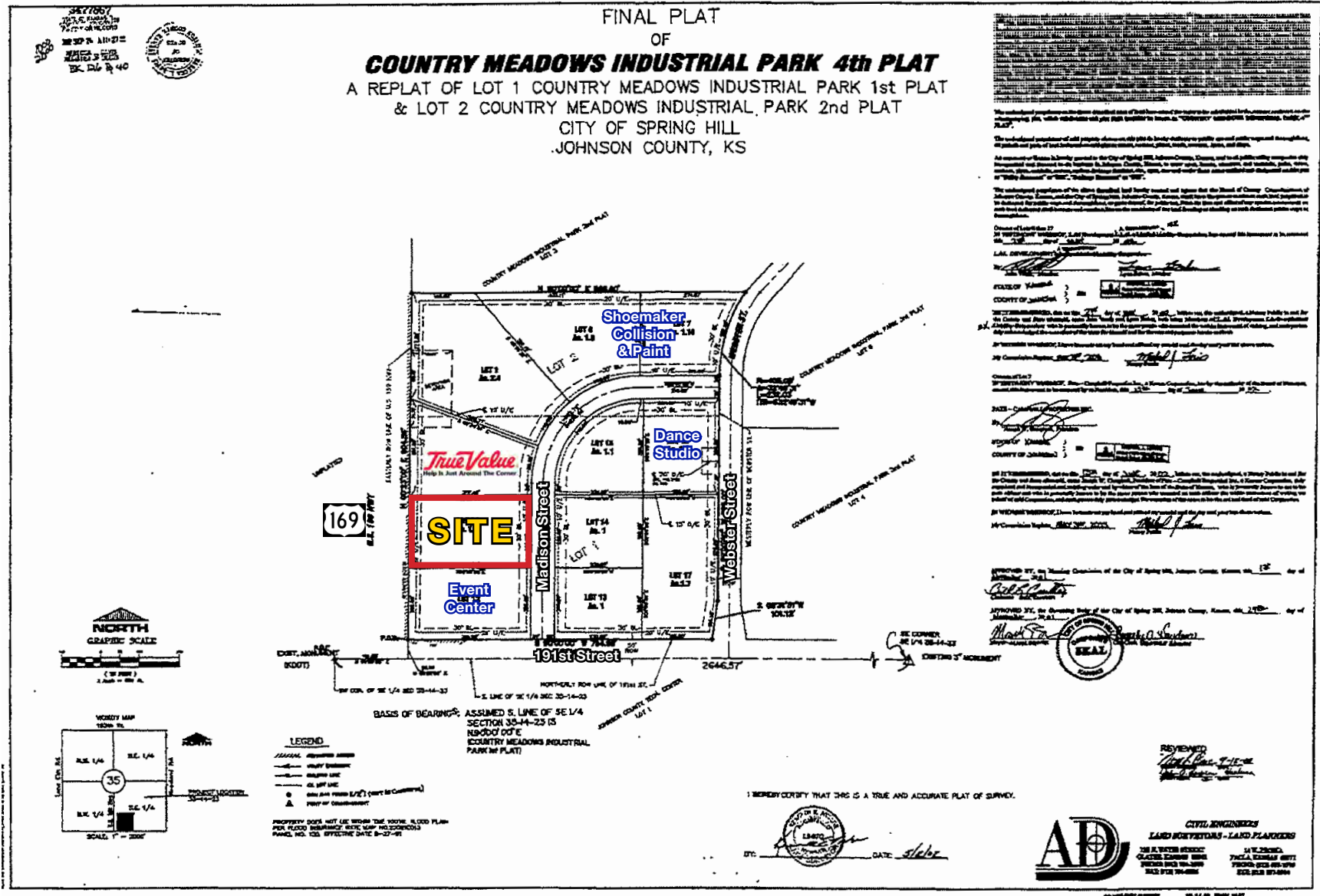




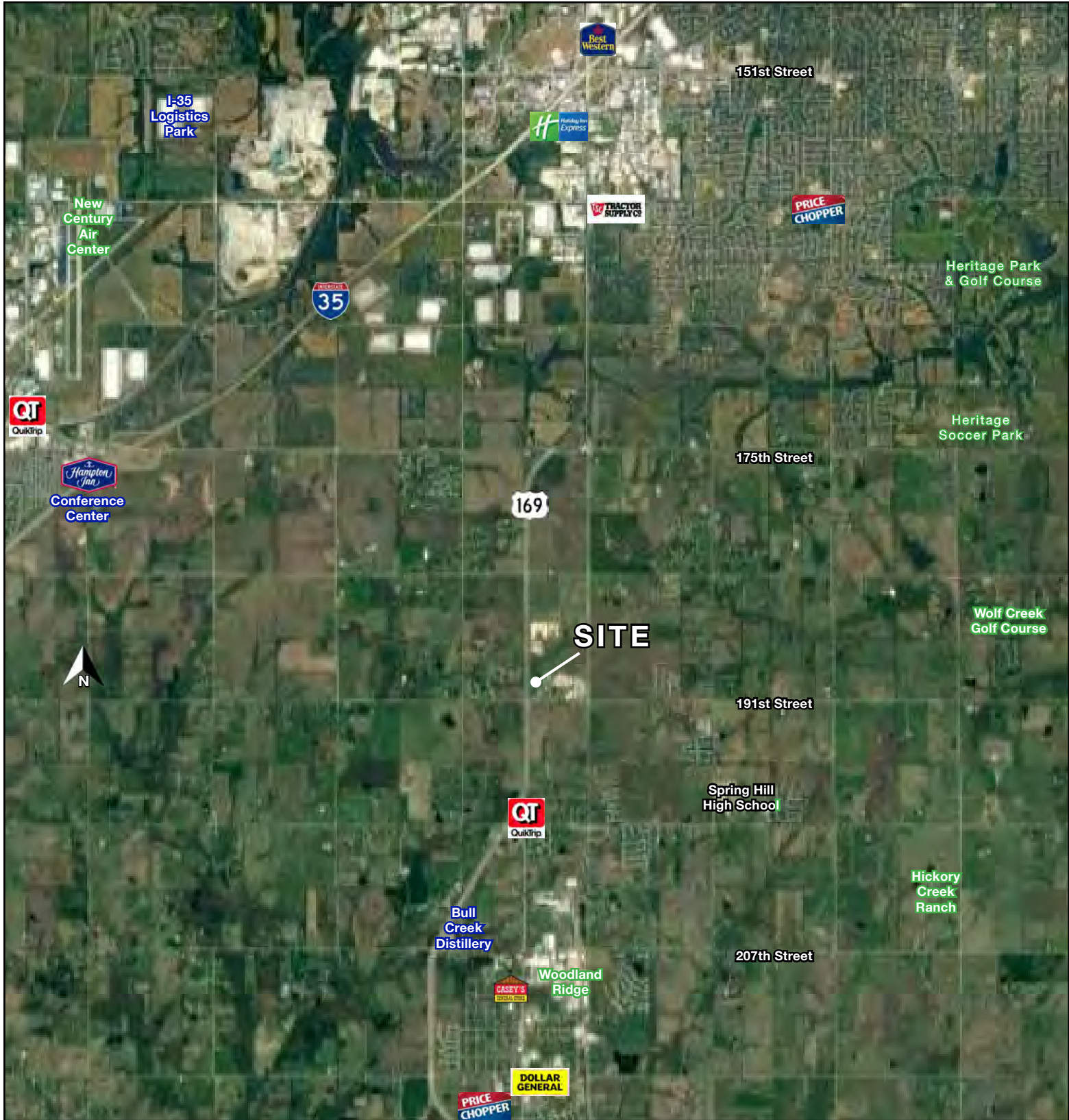
SPRING HILL PAD SITE FOR SALE

191st & 169 Highway (NEQ) Spring Hill, Kansas

PLAT MAP



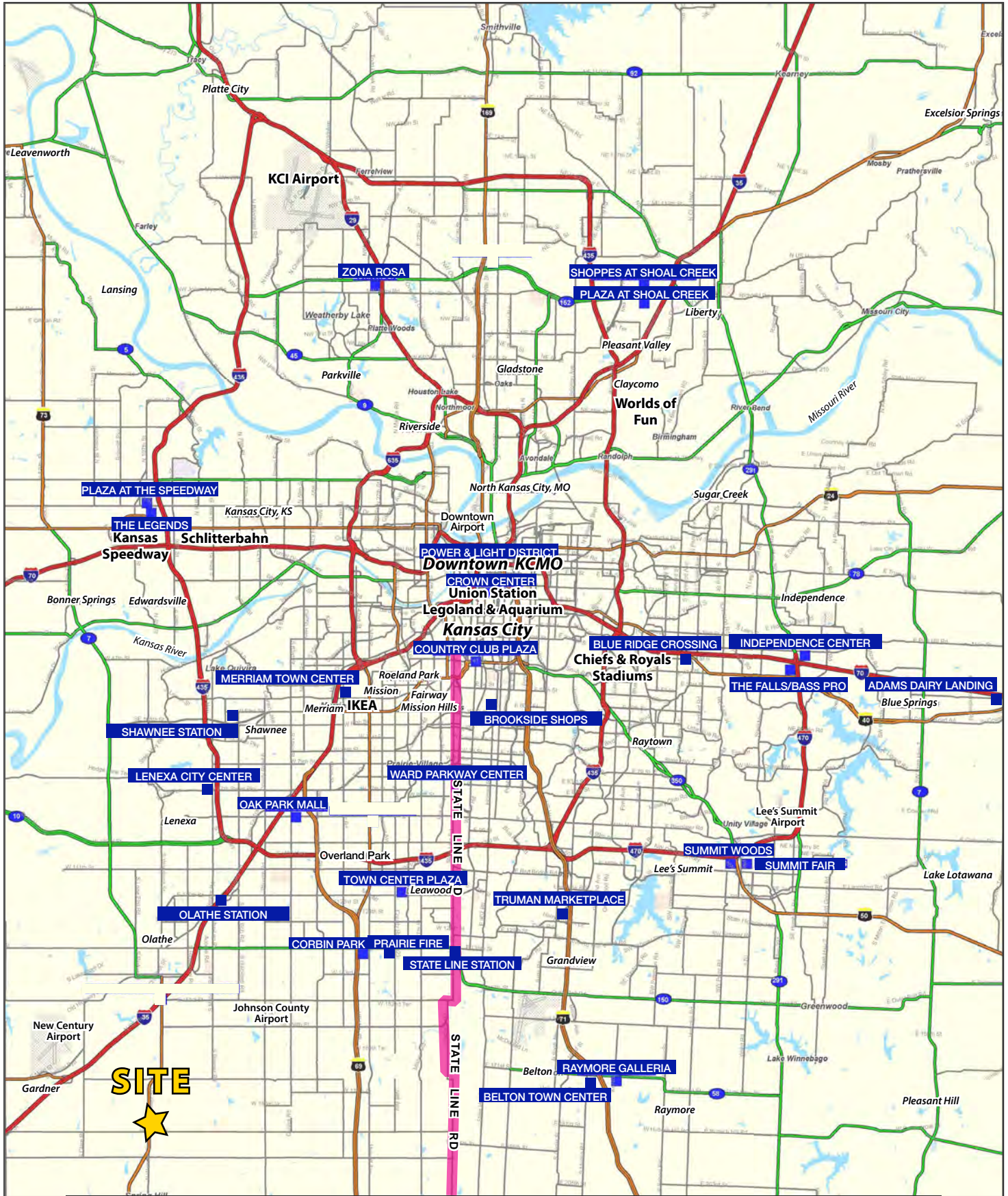
AERIAL





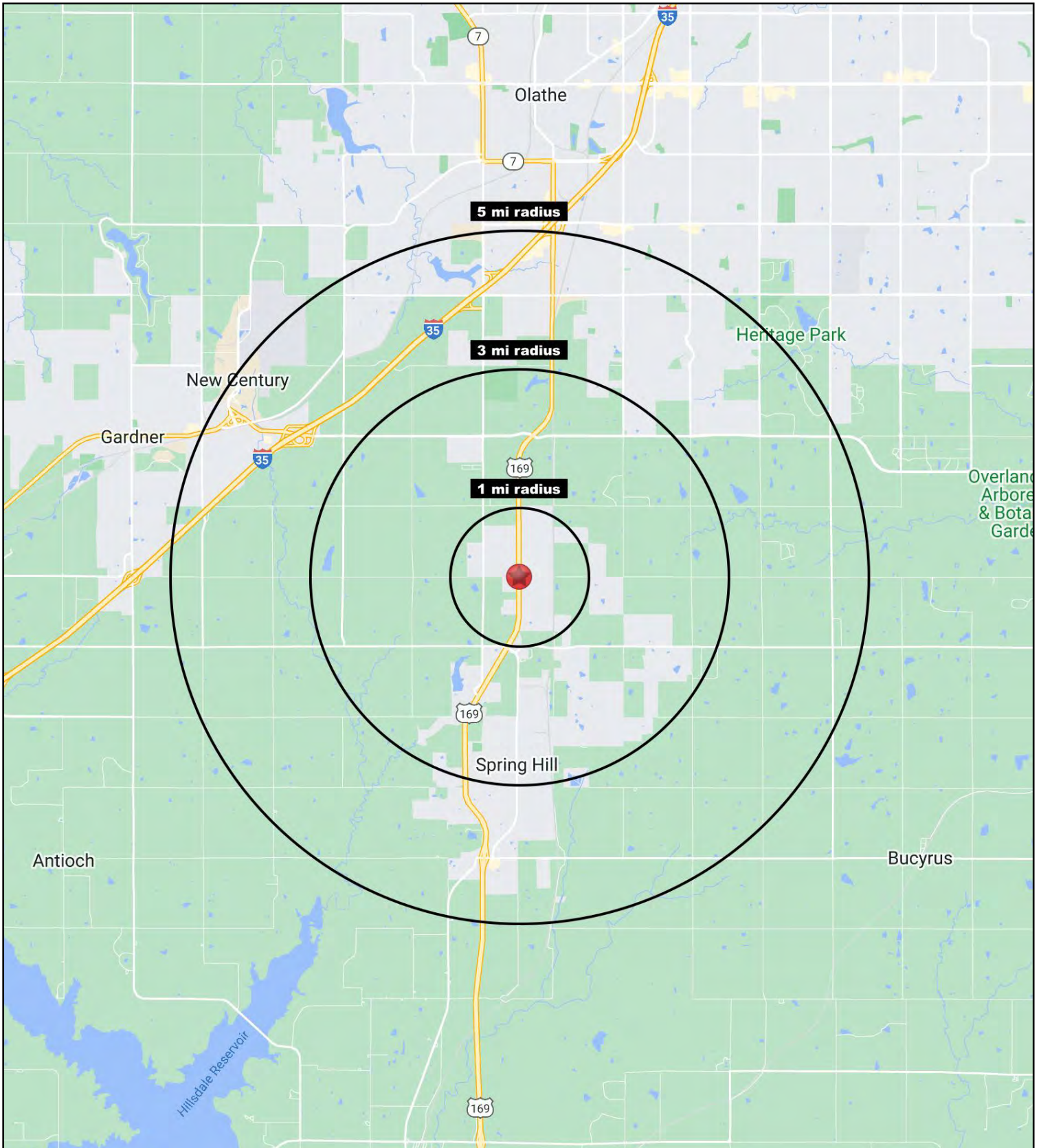
SPRING HILL PAD SITE FOR SALE

191st & 169 Highway (NEQ) Spring Hill, Kansas



SPRING HILL PAD SITE FOR SALE

191st & 169 Highway (NEQ) Spring Hill, Kansas





SPRING HILL PAD SITE FOR SALE

191st & 169 Highway (NEQ) Spring Hill, Kansas

191st & 169 Highway Spring Hill, KS 66083	1 mi radius	3 mi radius	5 mi radius
Population			
2022 Estimated Population	531	7,854	34,780
2027 Projected Population	885	9,523	38,967
2020 Census Population	317	7,503	34,171
2010 Census Population	252	5,343	26,716
Projected Annual Growth 2022 to 2027	13.3%	4.3%	2.4%
Historical Annual Growth 2010 to 2022	9.2%	3.9%	2.5%
2022 Median Age	42.7	36.7	33.7
Households			
2022 Estimated Households	196	2,799	11,707
2027 Projected Households	344	3,528	13,403
2020 Census Households	113	2,649	11,472
2010 Census Households	89	1,902	9,032
Projected Annual Growth 2022 to 2027	15.2%	5.2%	2.9%
Historical Annual Growth 2010 to 2022	10.0%	3.9%	2.5%
Race and Ethnicity			
2022 Estimated White	88.3%	86.6%	81.5%
2022 Estimated Black or African American	0.9%	1.9%	3.5%
2022 Estimated Asian or Pacific Islander	1.0%	1.3%	3.4%
2022 Estimated American Indian or Native Alaskan	0.1%	0.5%	0.4%
2022 Estimated Other Races	9.6%	9.7%	11.1%
2022 Estimated Hispanic	7.0%	6.0%	7.7%
Income			
2022 Estimated Average Household Income	\$126,702	\$90,354	\$107,373
2022 Estimated Median Household Income	\$90,750	\$91,419	\$102,838
2022 Estimated Per Capita Income	\$46,697	\$32,262	\$36,199
Education (Age 25+)			
2022 Estimated Elementary (Grade Level 0 to 8)	0.5%	1.7%	1.3%
2022 Estimated Some High School (Grade Level 9 to 11)	1.0%	3.6%	2.7%
2022 Estimated High School Graduate	37.7%	28.5%	21.5%
2022 Estimated Some College	18.6%	23.1%	18.8%
2022 Estimated Associates Degree Only	12.9%	11.9%	8.3%
2022 Estimated Bachelors Degree Only	17.9%	20.3%	29.0%
2022 Estimated Graduate Degree	11.3%	11.0%	18.4%
Business			
2022 Estimated Total Businesses	7	145	934
2022 Estimated Total Employees	49	2,097	14,202
2022 Estimated Employee Population per Business	6.6	14.4	15.2
2022 Estimated Residential Population per Business	71.2	54.0	37.2

©2022, Sites USA, Chandler, Arizona, 480-491-1112 Demographic Source: Applied Geographic Solutions 6/2022, TIGER Geography - RS1

